

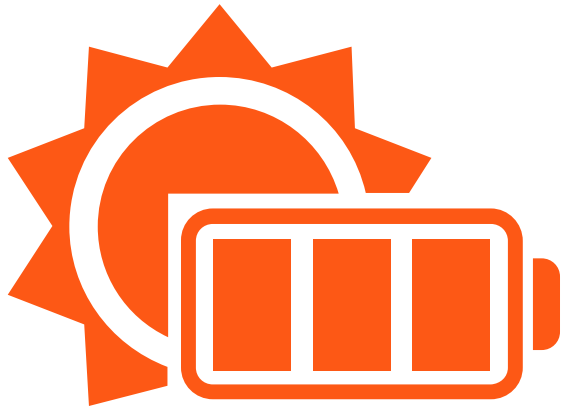


Community Meeting

April 2021



Today's Presentation



- Panelists will present an overview of the project
- Submit your written questions through the chat function or by calling/texting 833-333-7369
- Facilitator will present questions to panelists
- Project team will attempt to answer all questions during or after the meeting
- Provide mailing address to receive voucher to a local restaurant

Today's Speakers

Kevin Campbell

Development Manager



John Hecklau

EDR – Permitting
Consultant



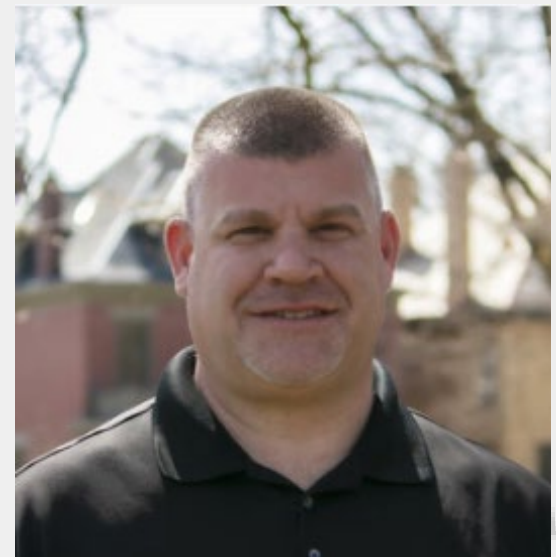
Jim Muscato

Young Sommer –
Permitting Attorney



Tom Bensen

ESRG – Energy Storage
Consultant



Agenda

1

Ridge View Solar

Benefits, History, Update, Schedule

2

Permitting

Studies, Process

3

Energy Storage

Background Info

4

EDF Renewables

Experience, Breadth of Knowledge, Core Values

Project Team

Kevin Campbell

Senior Manager -
Development



Haylee Ferington

Community Relations
Consultant



Brett Herzog

Land Agent



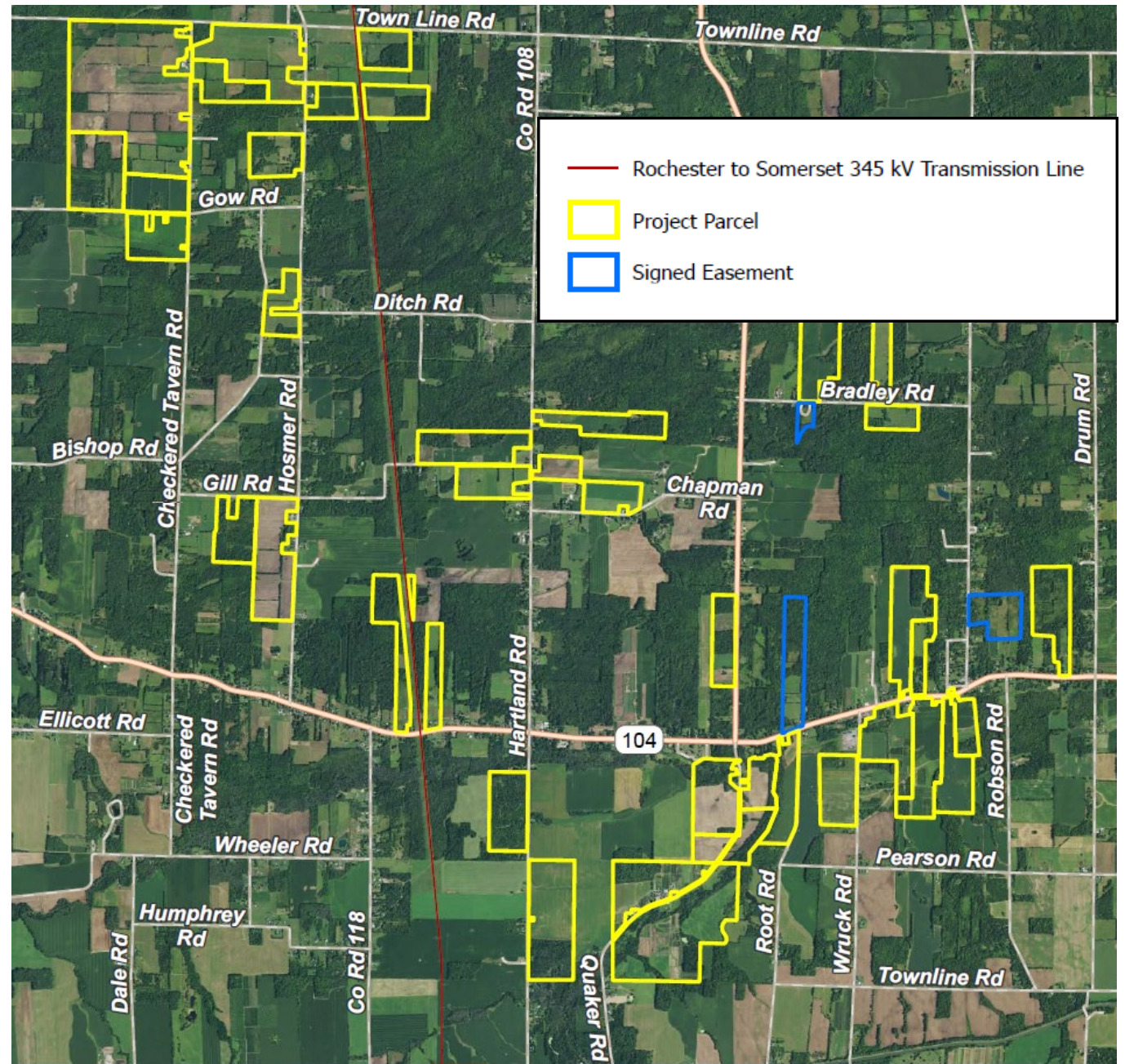
Grant Cushing

Brownfield Group



Ridge View Solar Project

- 350 MW
- 30+ families signed
- 3,000+ acres of signed land
- ~2,000 acres is buildable (i.e. can accommodate solar panels after setbacks and constraints)
- Signing easements to connect solar properties to point of interconnection





Keys to Project Siting





Project Update:

Local Benefits

- \$175,000 per year, for the first 10 years of operation, to offset utility bills for Town of Hartland residents
 - ~\$115/yr per household per year based on 1500 households
- >\$1M annual new revenues for Town of Hartland, Niagara County, Barker and Royalton Hartland School Districts
 - More than 10x more than the current taxes on participating properties
 - PILOT and Host Community Agreements 100% paid for by EDF Renewables
- >\$2M annually for landowners: diversified stable revenue stream for many decades

- \$40,000 annually from start of construction to support local groups and initiatives
- Committee made of community members + one person from EDF Renewables to determine how to allocate funding – based on applications



Host Community Fund



- Dozens of New Yorkers will participate in development and permitting activities
 - Field studies, engineering work, community relations, surveying, engineering, legal support, etc.
- 300 prevailing wage construction jobs estimated at peak
 - 2-year construction
 - Electricians, laborers, equipment operators
- 4 full time good paying operations and maintenance jobs (local preference)
 - Site manager, solar technicians
 - Landscaping, mowing, opportunities to co-locate agriculture for contractors/farmers
- Local vendors, suppliers, hospitality sector, etc.
- Educational opportunities for local schools and community colleges

Job Creation & Education

The US solar industry employs nearly 250,000 workers as of 2019, including 10,740 in New York State

Source: The Solar Foundation
<https://www.thesolarfoundation.org/>

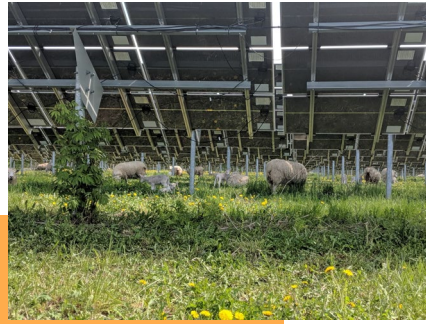
Helping Farming Communities Thrive

Protecting Farmland for Future Generations

- Solar energy provides stable revenues for 20+ years
 - Stabilizes farm income
 - Allows landowners to keep land in family for future generations
- After life of solar project
 - Farmland returns to farmland
 - Funds for removal of components and restoration secured with Town of Hartland (paid by EDF Renewables) at start of operations
- Solar facilitates complementary uses
 - Pollinators thrive within solar facilities
 - Sheep grazing under panels to offset lamb imports with domestic product

Local Benefits

Arnprior Solar Project- a 200-acre site in Ontario Canada, was once the largest solar project in North America. When built in 2009, it included 23.4 MW of solar panels.



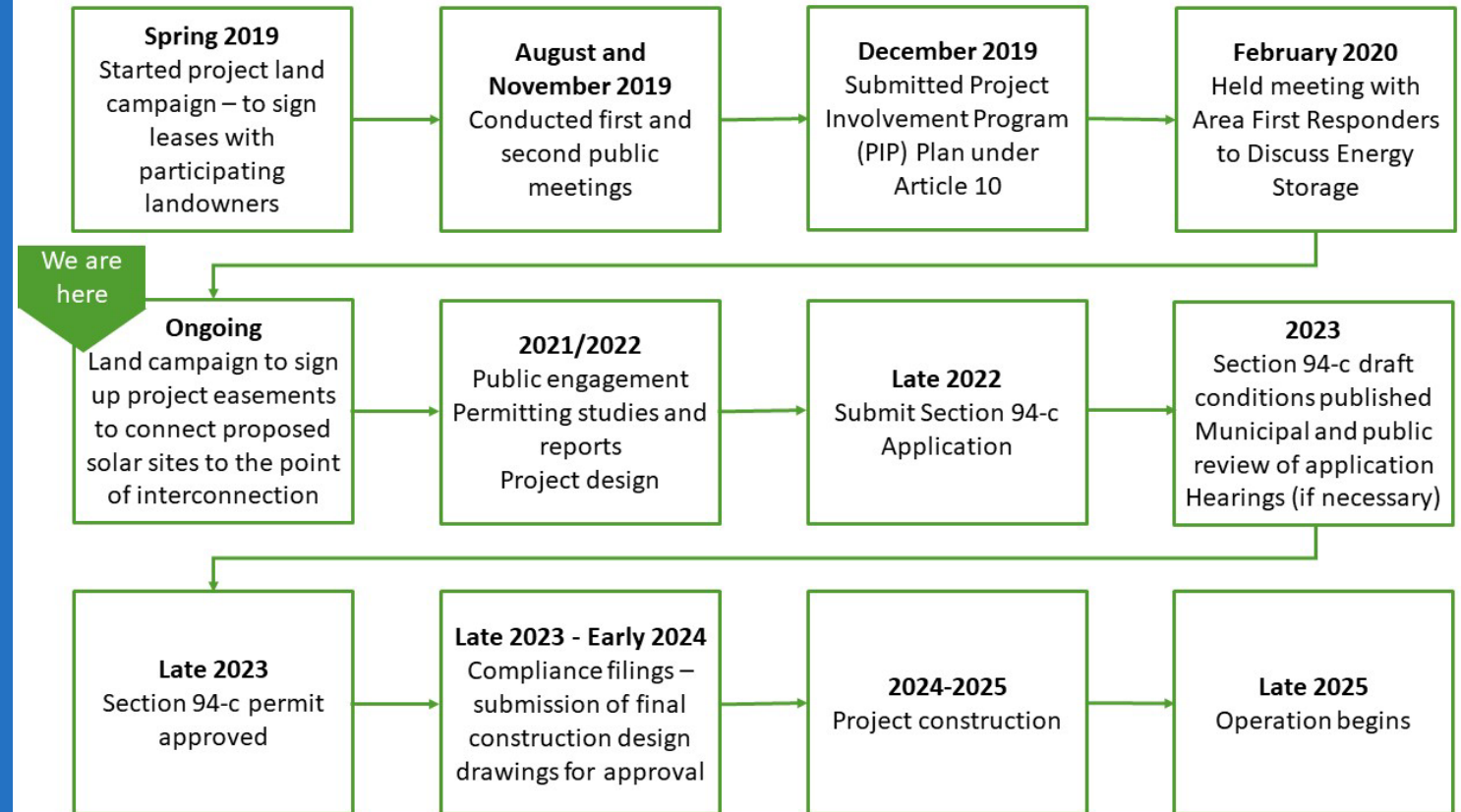
Now in its 12th year of operation, Arnprior is an example of a multi-use site, combining electricity production with agriculture

- 300 sheep graze vegetation under solar panels from spring until fall. EDFR contracts with a local farmer who was able to grow their operation and sell grass fed, free range lamb to local restaurants
- 300 jars of honey are produced by a local apiarist – the site can thrive ecologically
- Milkweed planted attracting monarch caterpillars and butterflies
- Greatly reduced use of pesticides/herbicides





Project Update Timeline



Project Update

2021 Procurement Opportunities

Ridge View Solar provides an opportunity to contribute to the Upstate New York Economy, versus importing electricity and allowing benefits to go out of state.

Poised to submit and win a contract through the NYSERDA Tier 1 Solicitation later this year

EDF Renewables was awarded three contracts following the 2020 NYSERDA Procurement

- 93.55 MW Moraine (Allegany County)
- 118 MW Tracy (Jefferson County)
- 90 MW Homer (Cortland County)

And one contract in the 2018 NYSERDA Procurement

- 177 MW Morris Ridge (Livingston County)

- Nine podcasts covering solar development
- Interviews with landowners, sheep farmer, bee keeper, energy storage, project developer, etc.
- One of the most complete and informational podcast series in New York, hosted by a member of the Niagara County Community, Mark Oehm.



EDF Renewables Episode 8: The Buzz, Bees Part In Solar



Ridge View Podcast Series

<https://www.ridgeviewsolar.com/multimedia/>

TRUSTED PARTNER FOR NEW YORK COMMUNITIES

- Win the hearts of communities – receive many support letters from host communities in New York
- Meet with key local stakeholders regularly – public meetings, small groups, individual homes – we want you to be informed and understand your concerns
- Importance of setbacks and visual buffers
 - 250+ feet from neighboring homes
 - 100+ feet from center line of highways
 - 50+ feet from property boundaries (unless neighboring property is also hosting solar panels)
 - Visual buffers along roads and adjacent to homes



EDF Renewables visual buffer, 3.5 years after planting – taller trees provide a thicker buffer for a neighboring home

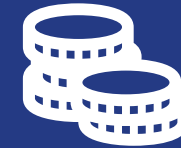
Hunting Around Solar Facilities

- We trust hunters to act in a safe and responsible manner as they would on any property.
- No setback required from facilities for hunting.
- Use common sense and best practices to prevent stray bullets or accidental firing onto the facilities
- Communication is key
 - Numbers will be posted at visible areas around the facility fence to reach out to our operations team at any time
 - Available to speak to a live voice 24 hours per day / 7 days a week



- Enjoyment of space is preserved with proper setbacks and visual buffering
- American Solar Energy Industries Association published a fact sheet concluding “that large-scale solar arrays often have no measurable impact on the value of adjacent properties, and in some cases may even have positive impacts”

Source: <https://www.seia.org/research-resources/solar-property-value>



Property Values

Sample Local Support Morris Ridge



Livingston County News

The project has the backing of Mount Morris' elected officials, with Town Supervisor Charles DiPasquale, former State Senator Catharine Young and State Assembly person Marjorie Byrnes all having submitted letters in support of the project to the state's Public Service Commission, which oversees the solar farm's permitting process.

Source: Livingston County News, March 29, 2019
<https://thelcn.com/lcn01/1000-acre-solar-farm-in-mount-morris-could-be-up-and-running-by-2022-20190329>

Rochester Democrat and Chronicle Win win?

Thirty miles southeast of Byron, the outlook is more positive. "We're 100 percent behind it. Everybody seems really excited about it", said Mount Morris Town Supervisor Charles DiPasquale, referring to the huge Morris Ridge Solar farm that would be built there. "It's going to be a win-win situation for the town in terms of revenue coming in, which we definitely need".

Source: Rochester Democrat and Chronicle, published Jan 24, 2019
<https://www.democratandchronicle.com/story/news/2019/01/24/gigantic-solar-farms-planned-rochester-region/2666009002/>

Spectrum News

"Everything they've asked us to do, we've asked them to do, they've done", Mt. Morris Town Supervisor Charles DiPasquale said. "We've had a good working relationship since day one. It's just unbelievable. We want this."

Source: Spectrum News, January 24, 2019
<https://spectrumlocalnews.com/nys/rochester/news/2019/01/24/nyserda-green-lights-3-local-mega-solar-farms->

Agenda

1

Ridge View Solar

Benefits, History, Update, Schedule

2

Permitting

Studies, Process

3

Energy Storage

Background Info

4

EDF Renewables

Experience, Breadth of Knowledge, Core Values

Environmental Design & Research Overview

- Environmental studies that are anticipated:
 - Wetland and Stream Delineations
 - Wildlife Site Characterization
 - Breeding Bird Surveys
 - Winter Raptor Surveys
 - Noise and Visual Impact Assessments
 - Archaeological Surveys
 - Historic Resources Effects Analysis
 - Stormwater Pollution Prevention Plan
- Following NYS Dept of Agriculture and Markets guidelines for construction on agricultural lands to preserve ag land.
- Wetlands and streams will be avoided where possible; significant impacts will be mitigated.
- Cultural resources will be avoided where practicable. Visual impacts to historic resources minimized with vegetative screening.



- New permitting process for renewable energy projects greater than 25MW in NYS established by the Accelerated Renewable Energy Growth & Community Benefit Act Legislation in 2020
- Sets uniform standards & conditions for projects to meet
- Expect that Ridge View Solar will transition from Article 10 to Section 94-c in the future
- One-year timeline for approval following a completeness determination (roughly 60 days following an application)
- Local agency funds (\$1,000/MW = \$350,000 for Ridge View Solar) – also known as intervenor funding available after application submitted
- Public comment opportunities on draft permit and evidentiary hearings if substantive and significant issues raised

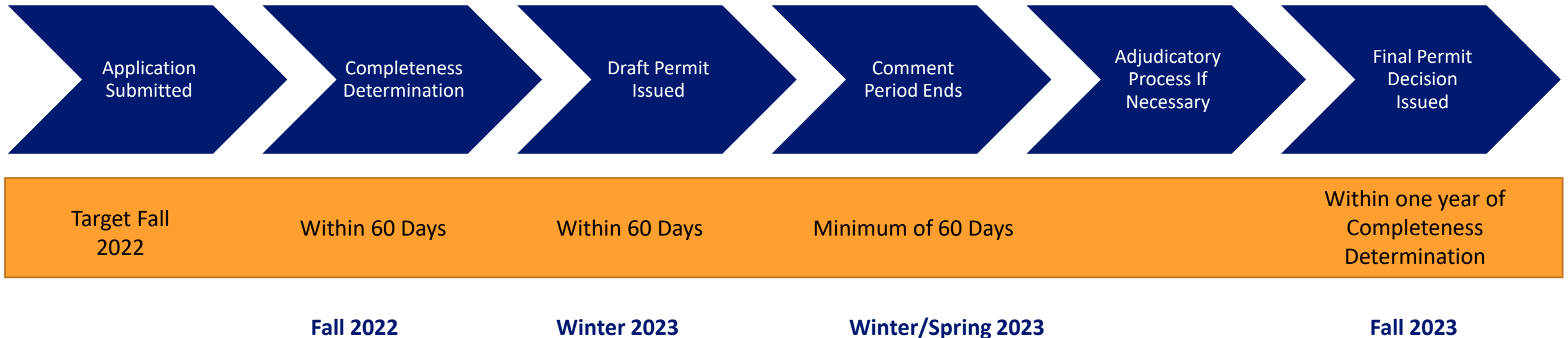


Section 94-c Permitting Process

NY Office of Renewable Energy Siting

ores.ny.gov

ORES – Section 94-c – Preliminary Timeline



Local Agency Fee applications due one month after application submitted

Prior to submitting application in the fall of 2022, EDF Renewables is committed to a thorough community engagement process (informing → listening → answering questions → finding common ground). That engagement will continue throughout project life.

Town of Hartland / Niagara County

- Local laws and land uses
- Emergency response
- Transportation
- Cultural
- Visual
- Socioeconomic

New York State

- Cultural and Archeological
- Visual
- Wetlands and Streams
- Endangered and Threatened Wildlife Species

Community

- Intervenor funds and engagement on local issues of interest through community meetings



Section 94-c Pre-Application Engagement

EDF Renewables plans to go beyond
minimum requirements

- Permitting includes \$1,000/MW (\$350,000) in a “local agency account” to defray costs in participating in the permitting process, for review & comment and hiring of experts
- Intervenor funding made available to host municipality, political subdivision, or local community members
- 75% of the funds are reserved for municipal entities (Town of Hartland)
- Submit a request to ORES within thirty (30) days after filing of siting permit application (i.e. fall 2022)
- Funding awards made within 30 days of the deadline to submit
- Instructions on how to submit on ORES website *ores.ny.gov*
- EDF Renewables committed to providing additional funding to the Town of Hartland to defray costs of participating in the permitting process prior to the application submission (when local agency funding applies). Town notified that funding can be provided immediately.



Section 94-c Local Agency Account

Agenda

1

Ridge View Solar

Benefits, History, Update, Schedule

2

Permitting

Studies, Process

3

Energy Storage

Background Info

4

EDF Renewables

Experience, Breadth of Knowledge, Core Values

Example Battery Energy Storage System

Battery cells

Combine to create modules, and are stored on racks



Energy Control System

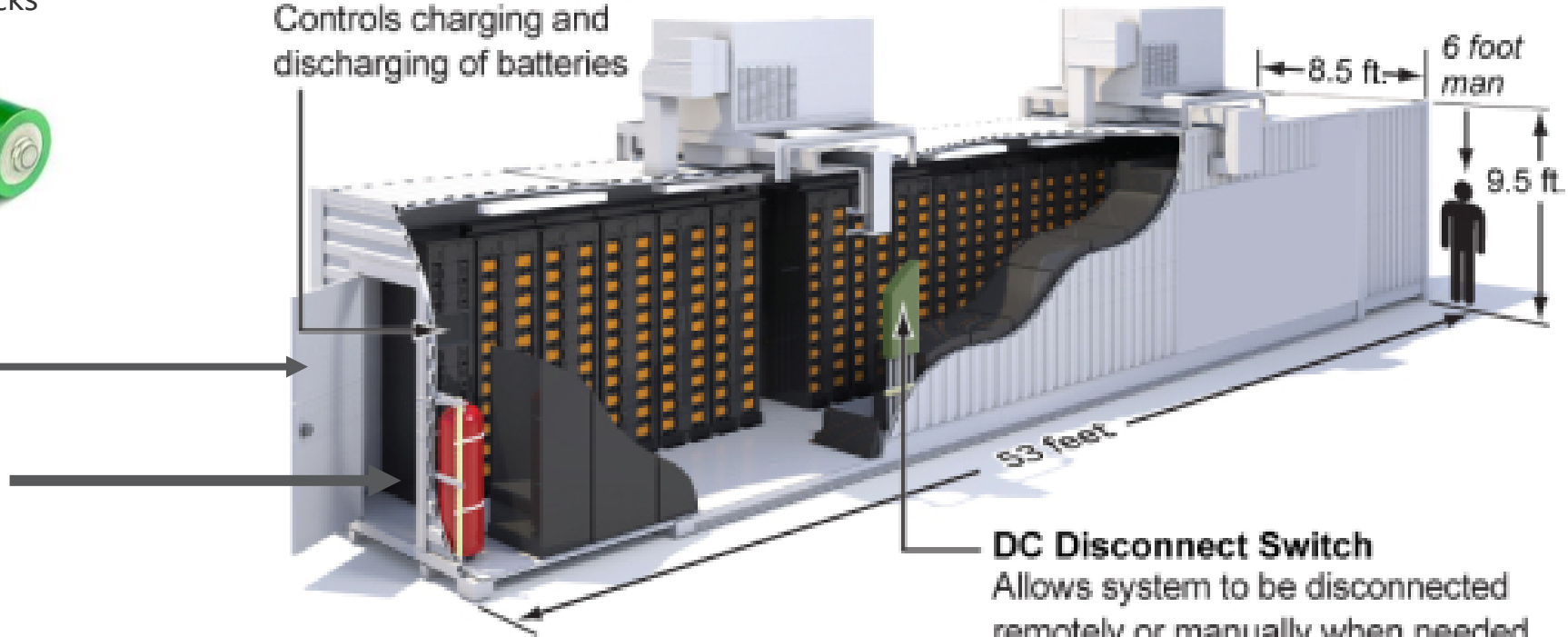
Controls charging and discharging of batteries

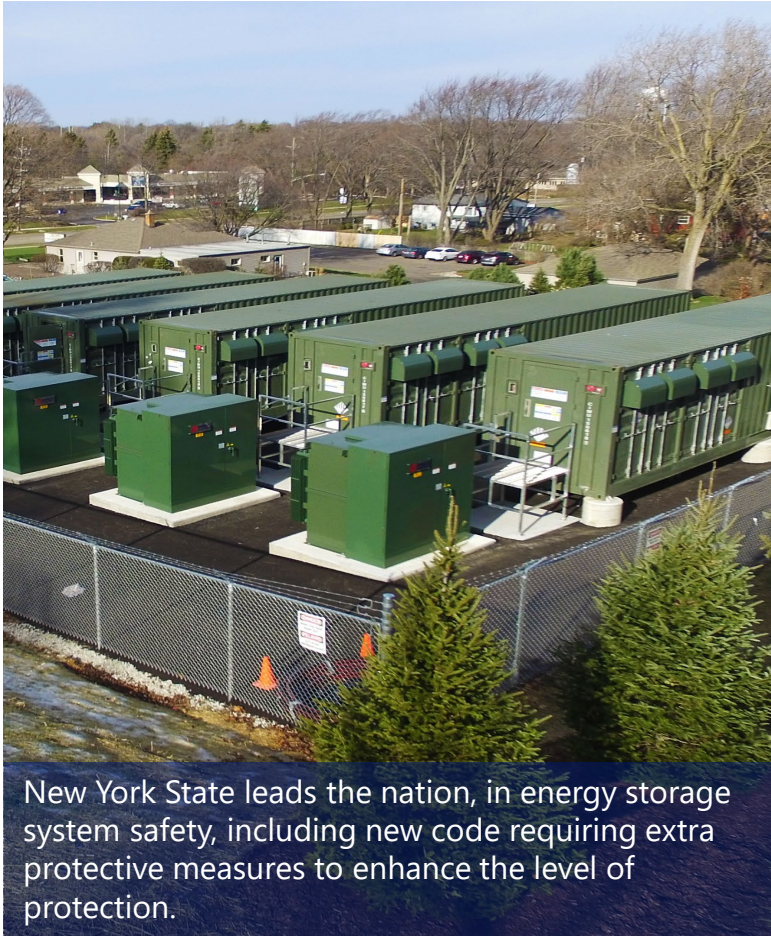
Thermal management

HVAC, Active cooling

Safety systems

System is constantly monitored and can automatically isolate parts or whole system





EDFR's McHenry Storage Project outside of Chicago, online since 2015

- EDF Renewables implemented 350 MW of storage globally for our projects and customers
- Technology in place for years
- New York leads the nation in safety
- Commonly integrated with renewable energy projects
- Li-ion batteries similar to those found in everyday electronics, but with added levels of protection and quality control
- Often co-located in cities and residential neighborhoods (e.g. NYC)
- Local and remote operations teams will monitor and maintain the system to the highest of standards
- Preparation of Emergency Preparedness and Response with feedback from local first responders
- Training of local first responders prior to installation and annually thereafter

Agenda

1

Ridge View Solar

Benefits, History, Update, Schedule

2

Permitting

Studies, Process

3

Energy Storage

Background Info

4

EDF Renewables

Experience, Breadth of Knowledge, Core Values

35+ years

We were on the forefront of the burgeoning wind industry in California as a service provider beginning in 1985.

\$18+ billion

Since 2010, we have paid over \$18 billion to vendors, including lease payments made to landowners.

8,000

Our 20 GW project development has created 8,000 on-site jobs.

Based on an employment factor of 4 jobs per MW IRENA Annual Review

20 GW

We expanded into project development in 2000 and have developed 20 GW of grid-scale solar and wind projects across North America.

as of 12/31/20

EDF Renewables

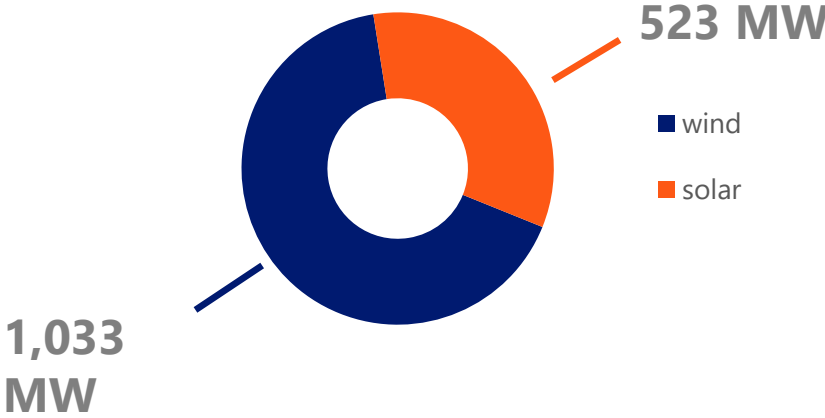
GRID-SCALE POWER

Delivering Significant Benefits

EDF Renewables' Grid-Scale Power team ; provides **origination, development, transaction and construction** services for large-scale wind (offshore and onshore), solar power generation and storage projects across North America.

Our team of leaders can solve energy challenges facing businesses and communities no matter the size or complexity.

1.6GW (1,600MW put in service in 2020)



Our Commitment to Ethical Development

These principles reflect our promise to our host communities, landowners, and other stakeholders.

EDF Renewables is committed to:

- Honesty and transparency in all our development activities
- Engaging with all stakeholders and remaining open to taking input that will improve projects and mitigate impacts
- Being present and available in the community to ensure all voices are heard
- Treating landowners, host communities, and stakeholders fairly and equitably



Solar Facility Operations – 24/7/365

- EDF Renewables will have a local team of operations personnel to monitor and maintain the system to the highest of standards.
- Emergency Preparedness and Response Plan will be written with feedback from the first responder community.
- Training of Local First Responders prior to installation and annually thereafter.
- The facility **will be monitored** 24/7 365 days per year from operations control center in San Diego California.
- Maintain electronic cyber and physical security perimeter requirements.
- Disaster Recovery plan in place to mitigate remote monitoring impacts, including second redundant facility in Arizona with co-location servers, backup power to support 48-72 hours of power should there be a local utility outage and network connectivity redundancy.



EDF Renewables' 24/7 NERC-compliant operations control center located in San Diego, CA, where remote monitoring, diagnostics, troubleshooting, and cybersecurity measures are implemented for all wind and solar power farms under operation

We want to hear from you!

Brett Herzog – Land Agent

814-598-0168

bherzog@canacre.com

Haylee Ferington – Community Engagement

716-417-7470

Haylee.Ferington@edf-re.com

Kevin Campbell – Development Manager

1-833-333-7369

NewYorkSolar@edf-re.com

Stay connected

<https://www.ridgeviewsolar.com/>

- 
- ✓ Generating new revenues
 - ✓ Supporting farmers and landowners
 - ✓ Preserving farmland
 - ✓ Creating good paying jobs